

---

# Unilift AP35B, AP50B

Installation and operating instructions

GB D F I E P GR NL S FIN DK

PL RU H SI HR SER RO BG CZ SK TR

UA



## **(GB) Declaration of Conformity**

We Grundfos declare under our sole responsibility that the products Unilift AP35B and AP50B, to which this declaration relates, are in conformity with the Council directives on the approximation of the laws of the EC member states relating to:

- Machinery Directive (2006/42/EC).  
Standards used: EN 809: 1998 and EN 60204-1: 2006.
- Low voltage Directive (2006/95/EC).  
Standards used: EN 60335-1: 2002 and EN 60335-2-41: 2003.
- EMC Directive (2004/108/EC).
- Construction Products Directive (89/106/EEC).  
Standard used: EN 12050-2: 2001.

## **(F) Déclaration de Conformité**

Nous, Grundfos, déclarons sous notre seule responsabilité, que les produits Unilift AP35B et AP50B, auxquels se réfère cette déclaration, sont conformes aux Directives du Conseil concernant le rapprochement des législations des Etats membres CE relatives aux normes énoncées ci-dessous :

- Directive Machines (2006/42/CE).  
Normes utilisées : EN 809: 1998 et EN 60204-1: 2006.
- Directive Basse Tension (2006/95/CE).  
Normes utilisées : EN 60335-1 : 2002 et EN 60335-2-41 : 2003.
- Directive Compatibilité Electromagnétique CEM (2004/108/CE).
- Directive sur les Produits de Construction (89/106/CEE)  
Norme utilisée : EN 12050-2 : 2001.

## **(E) Declaración de Conformidad**

Nosotros, Grundfos, declaramos bajo nuestra entera responsabilidad que los productos Unilift AP35B y AP50B, a los cuales se refiere esta declaración, están conformes con las Directivas del Consejo en la aproximación de las leyes de los Estados Miembros del EM:

- Directiva de Maquinaria (2006/42/CE).  
Normas aplicadas: EN 809: 1998 y EN 60204-1: 2006.
- Directiva de Baja Tensión (2006/95/CE).  
Normas aplicadas: EN 60335-1: 2002 y EN 60335-2-41: 2003.
- Directiva EMC (2004/108/CE).
- Directiva de Productos de Construcción (89/106/CEE).  
Norma aplicada: EN 12050-2: 2001.

## **(GR) Δήλωση Συμμόρφωσης**

Εμείς, η Grundfos, δηλώνουμε με αποκλειστικά δική μας ευθύνη ότι τα προϊόντα Unilift AP35B και AP50B στα οποία αναφέρεται η παρούσα δήλωση, συμμορφώνονται με τις εξής Οδηγίες του Συμβουλίου περί προεργείας των νομοθεσιών των κρατών μελών της ΕΕ:

- Οδηγία για μηχανήματα (2006/42/ΕC).  
Πρότυπα που χρησιμοποιήθηκαν: EN 809: 1998 και EN 60204-1: 2006.
- Οδηγία χαμηλής τάσης (2006/95/ΕC).  
Πρότυπα που χρησιμοποιήθηκαν: EN 60335-1: 2002 και EN 60335-2-41: 2003.
- Οδηγία Ηλεκτρομαγνητικής Συμβατότητας (EMC) (2004/108/ΕC).
- Οδηγία Παραγωγής Προϊόντων (89/106/ΕΕC).  
Πρότυπο που χρησιμοποιήθηκε: EN 12050-2: 2001.

## **(S) Försäkran om överensstämmelse**

Vi, Grundfos, försäkrar under ansvar att produkterna Unilift AP35B och AP50B, som omfattas av denna försäkran, är i överensstämmelse med rådets direktiv om inbördes närmande till EU-medlemsstaternas lagstiftning, avseende:

- Maskindirektivet (2006/42/EG).
- Tillämpade standarder: EN 809: 1998 och EN 60204-1: 2006.
- Lågspänningsdirektivet (2006/95/EG).
- Tillämpade standarder: EN 60335-1: 2002 och EN 60335-2-41: 2003.
- EMC-direktivet (2004/108/EG).
- Byggsproduktdirektivet (89/106/EEG).  
Tillämpad standard: EN 12050-2: 2001.

## **(D) Konformitätserklärung**

Wir, Grundfos, erklären in alleiniger Verantwortung, dass die Produkte Unilift AP35B und AP50B, auf die sich diese Erklärung bezieht, mit den folgenden Richtlinien des Rates zur Angleichung der Rechtsvorschriften der EU-Mitgliedsstaaten übereinstimmen:

- Maschinenrichtlinie (2006/42/EG).  
Normen, die verwendet wurden: EN 809: 1998 und EN 60204-1: 2006.
- Niederspannungsrichtlinie (2006/95/EG).  
Normen, die verwendet wurden: EN 60335-1: 2002 und EN 60335-2-41: 2003.
- EMV-Richtlinie (2004/108/EG).
- Bauprodukterichtlinie (89/106/EWG).  
Norm, die verwendet wurde: EN 12050-2: 2001

## **(I) Dichiarazione di Conformità**

Grundfos dichiara sotto la sua esclusiva responsabilità che i prodotti Unilift AP35B e AP50B, ai quali si riferisce questa dichiarazione, sono conformi alle seguenti direttive del Consiglio riguardanti il ravvicinamento delle legislazioni degli Stati membri CE:

- Direttiva Macchine (2006/42/CE).  
Norme applicate: EN 809: 1998 e EN 60204-1: 2006.
- Direttiva Bassa Tensione (2006/95/CE).  
Norme applicate: EN 60335-1: 2002 e EN 60335-2-41: 2003.
- Direttiva EMC (2004/108/CE).
- Direttiva Prodotti da Costruzione (89/106/CEE)  
Norma applicata: EN 12050-2: 2001.

## **(P) Declaração de Conformidade**

A Grundfos declara sob sua única responsabilidade que os produtos Unilift AP35B e AP50B, aos quais diz respeito esta declaração, estão em conformidade com as seguintes Directivas do Conselho sobre a aproximação das legislações dos Estados Membros da CE:

- Directiva Máquinas (2006/42/CE).  
Normas utilizadas: EN 809: 1998 e EN 60204-1: 2006.
- Directiva Baixa Tensão (2006/95/CE).  
Normas utilizadas: EN 60335-1: 2002 e EN 60335-2-41: 2003.
- Directiva EMC (compatibilidade electromagnética) (2004/108/CE).
- Directiva Produtos Construção (89/106/CEE).  
Norma utilizada: EN 12050-2: 2001.

## **(NL) Overeenkomstigheidsverklaring**

Wij, Grundfos, verklaren geheel onder eigen verantwoordelijkheid dat de producten Unilift AP35B en AP50B waarop deze verklaring betrekking heeft, in overeenstemming zijn met de Richtlijnen van de Raad in zake de onderlinge aanpassing van de wetgeving van de EG Lidstaten betreffende:

- Machine Richtlijn (2006/42/EC).  
Gebruikte normen: EN 809: 1998 en EN 60204-1: 2006.
- Laagspannings Richtlijn (2006/95/EC).  
Gebruikte normen: EN 60335-1: 2002 en EN 60335-2-41: 2003.
- EMC Richtlijn (2004/108/EC).
- Bouwproducten Richtlijn (89/106/EEC).  
Gebruikte normen: EN 12050-2: 2001.

## **(FIN) Vaatimustenmukaisuusvakuutus**

Me, Grundfos, vakuutamme omalla vastuullamme, että tuotteet Unilift AP35B ja AP50B ita tämä vakuutus koskee, ovat EY:n jäsenvaltioiden lainsäädännön yhdenmukaistamiseen tähtäviin Euroopan neuvoston direktiivien vaatimusten mukaisia seuraavasti:

- Konedirektiivi (2006/42/EY).  
Sovellettavat standardit: EN 809: 1998 ja EN 60204-1: 2006.
- Pienjännitedirektiivi (2006/95/EY).  
Sovellettavat standardit: EN 60335-1: 2002 ja EN 60335-2-41: 2003.
- EMC-direktiivi (2004/108/EY).
- Rakennustuotedirektiivi (89/106/ETY).  
Sovellettu standardi: EN 12050-2: 2001.

## **(DK)** Overensstemmelseserklæring

Vi, Grundfos, erklærer under ansvar at produkterne Unilift AP35B og AP50B som denne erklæring omhandler, er i overensstemmelse med disse af Rådets direktiver om indbyrdes tilnærmelse til EF-medlemsstaternes lovgivning:

- Maskindirektivet (2006/42/EF).
- Anvendte standarder: EN 809: 1998 og EN 60204-1: 2006.
- Lavspændingsdirektivet (2006/95/EF).
- Anvendte standarder: EN 60335-1: 2002 og EN 60335-2-41: 2003.
- EMC-direktiv (2004/108/EF).
- Byggevaredirektivet (89/106/EF/ØF).
- Anvendt standard: EN 12050-2: 2001.

## **(RU)** Декларация о соответствии

Мы, компания Grundfos, со всей ответственностью заявляем, что изделия Unilift AP35B и AP50B, к которым относится настоящая декларация, соответствуют следующим Директивам Совета Евросоюза об унификации законодательных предписаний стран-членов ЕС:

- Механические устройства (2006/42/EC).
- Применяющиеся стандарты: EN 809: 1998 и EN 60204-1: 2006.
- Низковольтное оборудование (2006/95/EC).
- Применяющиеся стандарты: EN 60335-1: 2002 и EN 60335-2-41: 2003.
- Электромагнитная совместимость (2004/108/EC).
- Директива на строительные материалы и конструкции (89/106/ЕЭС).
- Применявшийся стандарт: EN 12050-2: 2001.

## **(SI)** Izjava o skladnosti

V Grundfosu s polno odgovornostjo izjavljamo, da so naši izdelki Unilift AP35B in AP50B, na katere se ta izjava nanaša, v skladu z naslednjimi direktivami Sveta o približevanju zakonodaje za izenačevanje pravnih predpisov držav članic ES:

- Direktiva o strojih (2006/42/ES).
- Uporabljeni normi: EN 809: 1998 in EN 60204-1: 2006.
- Direktiva o nizki napetosti (2006/95/ES).
- Uporabljeni normi: EN 60335-1: 2002 in EN 60335-2-41: 2003.
- Direktiva o elektromagnetni združljivosti (EMC) (2004/108/ES).
- Direktiva konstruiranja proizvoda (89/106/EGS).
- Uporabljena norma: EN 12050-2: 2001.

## **(SER)** Deklaracija o konformitetu

Mi, Grundfos, izjavljamo pod vlastitom odgovornošću da je proizvod Unilift AP35B i AP50B, na koji se ova izjava odnosi, u skladu sa direktivama Saveta za usklađivanje zakona država članica EU:

- Direktiva za mašine (2006/42/EC).
- Korišćeni standardi: EN 809: 1998 i EN 60204-1: 2006.
- Direktiva niskog napona (2006/95/EC).
- Korišćeni standardi: EN 60335-1: 2002 i EN 60335-2-41: 2003.
- EMC direktiva (2004/108/EC).
- Direktiva o konstrukciji proizvoda (89/106/EEC).
- Korišćen standard: EN 12050-2: 2001.

## **(BG)** Декларация за съответствие

Ние, фирма Grundfos, заявяваме с пълна отговорност, че продуктите Unilift AP35B и AP50B, за които се отнася настоящата декларация, отговарят на следните указания на Съвета за уеднавяване на правните разпоредби на държавите членки на ЕС:

- Директива за машините (2006/42/EC).
- Приложени стандарти: EN 809: 1998 и EN 60204-1: 2006.
- Директива за нисковолтови системи (2006/95/EC).
- Приложени стандарти: EN 60335-1: 2002 и EN 60335-2-41: 2003.
- Директива за електромагнитна съвместимост (2004/108/EC).
- Директива за строителни продукти (89/106/EEC).
- Приложен стандарт: EN 12050-2: 2001.

## **(SK)** Prehlásenie o konformite

My firma Grundfos prehlasujeme na svoju plnú zodpovednosť, že výrobky Unilift AP35B a AP50B, na ktoré sa toto prehlásenie vzťahuje, sú v súlade s ustanoveniami smernice Rady pre zblíženie právnych predpisov členských štátov Európskeho spoločenstva v oblastiach:

- Smernica pre strojové zariadenie (2006/42/EC).
- Použité normy: EN 809: 1998 a EN 60204-1: 2006.
- Smernica pre nízkonapäťové aplikácie (2006/95/EC).
- Použité normy: EN 60335-1: 2002 a EN 60335-2-41: 2003.
- Smernica pre elektromagnetickú kompatibilitu (2004/108/EC).
- Smernica o konštrukcii výrobkov (89/106/EEC).
- Použitá norma: EN 12050-2: 2001.

## **(PL)** Deklaracja zgodności

My, Grundfos, oświadczamy z pełną odpowiedzialnością, że nasze wyroby Unilift AP35B oraz AP50B, których deklaracja niniejsza dotyczy, są zgodne z następującymi wytycznymi Rady d/s ujednolicenia przepisów prawnych krajów członkowskich WE:

- Dyrektywa Maszynowa (2006/42/WE).
- Zastosowane normy: EN 809: 1998 oraz EN 60204-1: 2006.
- Dyrektywa Niskonapięciowa (LVD) (2006/95/WE).
- Zastosowane normy: EN 60335-1: 2002 oraz EN 60335-2-41: 2003.
- Dyrektywa EMC (2004/108/WE).
- Dyrektywa Wyrobów Budowlanych (89/106/WE).
- Zastosowana norma: EN 12050-2: 2001.

## **(H)** Megfelelőségi nyilatkozat

Mi, a Grundfos, egyedüli felelősséggel kijelentjük, hogy a Unilift AP35B és AP50B termékek, amelyekre jelen nyilatkozik vonatkozik, megfelelnek az Európai Unió tagállamainak jogi irányelveit összehangoló tanács alábbi előírásainak:

- Gépek (2006/42/EK).
- Alkalmazott szabványok: EN 809: 1998 és EN 60204-1: 2006.
- Kisfeszültségű Direktíva (2006/95/WE).
- Alkalmazott szabványok: EN 60335-1: 2002 és EN 60335-2-41: 2003.
- EMC Direktíva (2004/108/EK).
- Építési termékek Direktíva (89/106/EGK).
- Alkalmazott szabvány: EN 12050-2: 2001.

## **(HR)** Izjava o usklađenosti

Mi, Grundfos, izjavljujemo pod vlastitom odgovornošću da je proizvod Unilift AP35B i AP50B, na koji se ova izjava odnosi, u skladu s direktivama ovog Vijeća o usklađivanju zakona država članica EU:

- Direktiva za strojeve (2006/42/EZ).
- Korištene norme: EN 809: 1998 i EN 60204-1: 2006.
- Direktiva za niski napon (2006/95/EZ).
- Korištene norme: EN 60335-1: 2002 i EN 60335-2-41: 2003.
- Direktiva za elektromagnetsku kompatibilnost (2004/108/EZ).
- Uredba o konstrukciji proizvoda (89/106/EEZ).
- Korištena norma: EN 12050-2: 2001.

## **(RO)** Declarație de Conformitate

Noi, Grundfos, declarăm pe propria răspundere că produsele Unilift KP AP35B și AP50B, la care se referă această declarație, sunt în conformitate cu aceste Directive de Consiliu asupra armonizării legilor Statelor Membre CE:

- Directiva Utilaje (2006/42/CE).
- Standarde utilizate: EN 809: 1998 și EN 60204-1: 2006.
- Directiva Tensiune Joasă (2006/95/CE).
- Standarde utilizate: EN 60335-1: 2002 și EN 60335-2-41: 2003.
- Directiva EMC (2004/108/CE).
- Directiva referitoare la produsele pentru construcții (89/106/CEE).
- Standard utilizat: EN 12050-2: 2001.

## **(CZ)** Prohlášení o shodě

My firma Grundfos prohlašujeme na svou plnou odpovědnost, že výrobky Unilift AP35B a AP50B, na něž se toto prohlášení vztahuje, jsou v souladu s ustanoveními směrnice Rady pro sblížení právních předpisů členských států Evropského společenství v oblastech:

- Směrnice pro strojní zařízení (2006/42/ES).
- Použité normy: EN 809: 1998 a EN 60204-1: 2006.
- Směrnice pro nízkonapětové aplikace (2006/95/ES).
- Použité normy: EN 60335-1: 2002 a EN 60335-2-41: 2003.
- Směrnice pro elektromagnetickou kompatibilitu (EMC) (2004/108/ES).
- Směrnice o konstrukci výrobků (89/106/ES).
- Použitá norma: EN 12050-2: 2001.

## **(TR)** Uygunluk Bildirgesi

Grundfos olarak bu beyannameye konu olan Unilift AP35B ve AP50B ürünlerini, AB Üyesi Ülkelere kanunlarını birbirine yaklaştırmaya üzerine KONSEY Direktifleriyle uyumlu olduğunu yazınca bizim sorumlu olduğumuz altındaki oduğumuz beyan ederiz:

- Makineler Yönetmeliği (2006/42/EC).
- Kullanılan standartlar: EN 809: 1998 ve EN 60204-1: 2006.
- Düşük Voltaj Yönetmeliği (2006/95/EC).
- Kullanılan standartlar: EN 60335-1: 2002 ve EN 60335-2-41: 2003.
- EMC Direktifi (2004/108/EC).
- Yapı Ürünleri Yönergesi (89/106/EEC).
- Kullanılan standart: EN 12050-2: 2001.

## **UA Свідчення про відповідність вимогам**

Компанія Grundfos заявляє про свою виключну відповідальність за те, що продукти Unilift AP35B та AP50B, на які поширюється дана декларація, відповідають таким рекомендаціям Ради з уніфікації правових норм країн - членів ЄС:

- Механічні прилади (2006/42/ЄС).  
Стандарти, що застосовувалися: EN 809: 1998 та EN 60204-1: 2006.
  - Низька напруга (2006/95/ЄС).  
Стандарти, що застосовувалися: EN 60335-1: 2002 та EN 60335-2-41: 2003.
  - Електромагнітна сумісність (2004/108/ЄС).  
Директива з конструкції продукції (89/106/ЄЄС).  
Стандарти, що застосовувалися: EN 12050-2: 2001.
- 

Tatabánya, 1st March 2010



Gábor Farkas  
Research and Development Manager

# Unilift AP35B, AP50B

Installation and operating instructions	6	GB
Montage- und Betriebsanleitung	13	D
Notice d'installation et d'entretien	22	F
Istruzioni di installazione e funzionamento	30	I
Instrucciones de instalación y funcionamiento	36	E
Instruções de instalação e funcionamento	44	P
Οδηγίες εγκατάστασης και λειτουργίας	52	GR
Installatie- en bedieningsinstructies	60	NL
Monterings- och driftsinstruktion	67	S
Asennus- ja käyttöohjeet	73	FIN
Monterings- og driftsinstruktion	79	DK
Instrukcja montażu i eksploatacji	85	PL
Руководство по монтажу и эксплуатации	94	RU
Szerelési és üzemeltetési utasítás	105	H
Navodila za montažo in obratovanje	112	SI
Montažne i pogonske upute	119	HR
Uputstvo za montažu i upotrebu	126	SER
Instrucțiuni de instalare și utilizare	133	RO
Упътване за монтаж и експлоатация	141	BG
Montážní a provozní návod	150	CZ
Návod na montáž a prevádzku	157	SK
Montaj ve kullanım kılavuzu	164	TR
Інструкції з монтажу та експлуатації	173	UA

CONTENTS

GB

	Page
<b>1. General description</b>	<b>6</b>
1.1 Applications	6
1.2 Storage and operating conditions	7
1.3 Sound pressure level	7
<b>2. Safety</b>	<b>7</b>
<b>3. Electrical connection</b>	<b>7</b>
3.1 Checking of direction of rotation	8
<b>4. Installation</b>	<b>8</b>
4.1 Connection	8
4.2 Pump location	9
4.3 Installation on auto-coupling	9
4.4 Free-standing installation	10
4.5 Setting of level switch	10
<b>5. Start-up</b>	<b>10</b>
<b>6. Maintenance and service</b>	<b>10</b>
6.1 Oil	10
6.2 Pump construction	11
6.3 Service kits	11
6.4 Contaminated pumps	11
<b>7. Fault finding chart</b>	<b>12</b>
<b>8. Disposal</b>	<b>12</b>



Prior to installation, read these installation and operating instructions. Installation and operation must comply with local regulations and accepted codes of good practice.

**Warning**

The use of this product requires experience with and knowledge of the product.



Persons with reduced physical, sensory or mental capabilities must not use this product, unless they are under supervision or have been instructed in the use of the product by a person responsible for their safety.

Children must not use or play with this product.

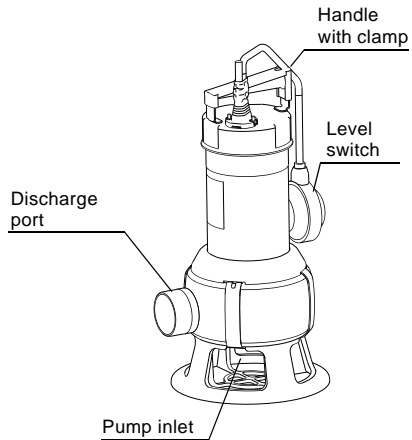


Fig. 1 Unilift AP35B, AP50B

1.1 Applications

The Grundfos Unilift AP35B and AP50B pumps are single-stage submersible pumps designed for the pumping of waste water.

The pump is capable of pumping water which contains a limited quantity of solids, however not stones and similar materials, without being blocked or damaged.

The pump is available for automatic as well as manual operation and can be installed in a permanent installation (on auto-coupling or as a free-standing pump) or used as a portable pump.

TM03 4189 1806

The pump is suitable for:

Applications	Unilift AP35B	Unilift AP50B
Groundwater lowering	●	●
Pumping in drainage pits	●	●
Pumping in surface water pits with inflow from roof gutters, shafts, tunnels, etc.	●	●
Emptying of ponds, tanks, etc.	●	●
Pumping of fibre-containing waste water from laundries and industries	●	●
Pumping of domestic waste water from septic tanks and sludge treating systems	●	●
Pumping of domestic waste water without discharge from water closets	●	●
Pumping of domestic waste water with discharge from water closets		●
Maximum particle size [mm]	35	50



The pump must not be used in or at swimming pools, garden ponds, etc. when there are persons in the water.

Incorrect application of the pump (e.g. resulting in blocking of the pump) and wear are not covered by the warranty.

## 1.2 Storage and operating conditions

<b>Storage temperature:</b>	Down to $-30\text{ }^{\circ}\text{C}$ .
<b>Minimum liquid temperature:</b>	$0\text{ }^{\circ}\text{C}$ .
<b>Maximum liquid temperature:</b>	$+40\text{ }^{\circ}\text{C}$ .
<b>Installation depth:</b>	Maximum 7 metres below liquid level.
<b>pH value:</b>	Between 4 and 10.
<b>Density:</b>	Maximum $1100\text{ kg/m}^3$ .
<b>Viscosity:</b>	Maximum $10\text{ mm}^2/\text{s}$ .
<b>Technical data:</b>	See pump nameplate.

## 1.3 Sound pressure level

The sound pressure level of the pump is lower than the limiting values stated in the EC Council Directive 2006/42/EC relating to machinery.

## 2. Safety



Pump installation in wells must be carried out by specially trained persons.

## 3. Electrical connection

**Note:** Depending on local regulations, a pump with 10 metres of mains cable must be used if the pump is used as a portable pump for different applications.

The electrical connection should be carried out in accordance with local regulations.

The operating voltage and frequency are marked on the pump nameplate. Please make sure that the motor is suitable for the electricity supply on which it will be used.

As a precaution, the pump must be connected to a socket with earth connection. The installation must be fitted with an earth leakage circuit breaker (ELCB) with a tripping current  $< 30\text{ mA}$ .



The pump must be connected to an external mains switch with a minimum contact gap of 3 mm in all poles. If the pump is not installed close to the switch, this must be of a lockable type.

**Three-phase pumps** must be connected to an external motor starter with differential release. The nominal current of the motor starter must correspond to the electrical data marked on the pump nameplate.

If a level switch is connected to a three-phase pump, the motor starter must be magnetically operated.

**Single-phase pumps** incorporate thermal overload protection and require no additional motor protection.

**Note:** If the motor is overloaded, it will stop automatically. When it has cooled to normal temperature, it will restart automatically.

### 3.1 Checking of direction of rotation

(Three-phase pumps only)

The direction of rotation should be checked every time the pump is connected to a new installation.

Check the direction of rotation as follows:

1. Position the pump so that the impeller can be observed.
2. Start the pump for a short period.
3. Observe the rotation of the impeller. The correct direction of rotation is indicated by an arrow on the top of the motor (clockwise when seen from the top or counter-clockwise when seen from the bottom). If the impeller rotates in the wrong direction, reverse the direction of rotation by interchanging two of the phases to the motor.

If the pump is connected to a piping system, the direction of rotation can be checked as follows:

1. Start the pump and check the quantity of water or the discharge pressure.
2. Stop the pump and interchange two of the phases to the motor.
3. Start the pump and check the quantity of water or the discharge pressure.
4. Stop the pump.
5. Compare the results taken under points 1 and 3. The connection which gives the larger quantity of water or the higher pressure is the correct direction of rotation.

### 4. Installation



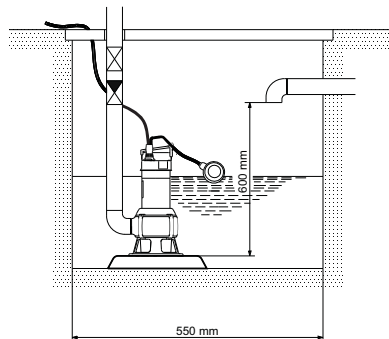
The installation of the pump must be carried out by specially trained persons. Care must be taken to ensure that persons cannot come into contact with the pump impeller.

#### 4.1 Connection

For permanent installation, it is recommended to fit a union, a non-return valve and an isolating valve in the discharge pipe.

If the pump is installed in a pit with a minimum free cable length of 100 mm, see fig. 5, the minimum pit dimensions must be as shown in fig. 2.

Furthermore, the pit should be dimensioned according to the relation between the water flow to the pit and the pump performance.



**Fig. 2** Minimum pit dimensions in pit if minimum free cable length is 100 mm

TM03 4190 1806



## 4.2 Pump location

The pump can be used in vertical or horizontal position, see fig. 3.

During continuous operation, the motor and the pump inlet must always be completely covered by the pumped liquid.

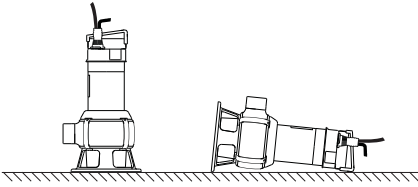


Fig. 3 Position of pump

When the pipe/hose has been connected, place the pump in its operating position.

**Note:** Do not lift or lower the pump by means of the electric cable.

Position the pump so that the pump inlet will not be blocked or partly blocked by sludge, mud or similar materials.

It is recommended to place the pump on a solid base, see fig. 4.

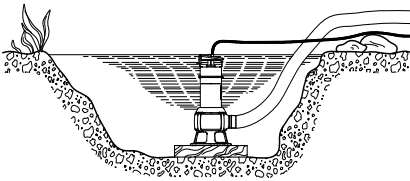


Fig. 4 Place pump on a solid base

In the case of permanent installation, the pit must be cleared of sludge, pebbles, etc. before the pump is installed.

TM03 4191 1806

TM01 3597 4998

## 4.3 Installation on auto-coupling

See figs. A and B, pages 182 and 183.

Pumps for permanent installation can be installed on a stationary auto-coupling and operated completely or partially submerged in the pumped liquid.

1. Drill mounting holes for guide rail bracket on the inside of the pit and fasten the guide rail bracket provisionally with two screws.
  2. Place the auto-coupling base unit on the bottom of the pit. Use a plumb line to establish the correct positioning. Fasten with heavy-duty expansion bolts. If the bottom of the pit is uneven, the auto-coupling base unit must be supported so that it is level when being fastened.
  3. Assemble the discharge line in accordance with the generally accepted procedures and without exposing the line to distortion or tension.
  4. Knock the guide rails on to the spigots of the bottom part of the auto-coupling. Bevel the inside of the guide rails to facilitate installation. The guide rails must fit tightly on the spigots. We recommend  $\frac{3}{4}$ " medium size pipes as guide rails.
  5. Adapt the length of the guide rails to fit precisely the bracket at the top.
  6. Unscrew the provisionally fastened guide rail bracket, fit it on top of the guide rails and finally fasten it firmly to the pit wall.
- Note:** The guide rails must not have any axial play as this would cause noise during pump operation.
7. Clean out debris from the pit before lowering the pump into the pit.
  8. Fit the auto-coupling half on to the discharge port of the pump. Then slide the guide bar of this coupling half between the guide rails and lower the pump into the pit by means of a chain. When the pump reaches the auto-coupling base unit, the pump will automatically connect tightly.
  9. Hang up the end of the chain on a suitable hook at the top of the pit.
  10. Adjust the length of the motor cable by coiling it up on a relief fitting, so the cable is not damaged during operation. Fasten the relief fitting to a suitable bracket at the top of the pit. Make sure that the cables are not sharply bent or pinched.

**Note:** The end of the cable must not be submerged, as water may penetrate through the cable into the motor.

#### 4.4 Free-standing installation

See fig. C, page 184.

For free-standing installation of the pumps, fit a 90° elbow to the discharge port. The pump can be installed with a hose or rigid pipe and valves.

In order to facilitate service of the pump, fit a flexible union or coupling to the discharge line for easy separation.

**If a hose is used**, make sure that the hose does not buckle and that the inside diameter of the hose matches that of the discharge port.

**If a rigid pipe is used**, the union or coupling, non-return valve and isolating valve should be fitted in the sequence mentioned, as seen from the pump side.

Lower the pump into the liquid.

If the pump is installed in muddy conditions or on uneven ground, it is recommended to support the pump on bricks.

#### 4.5 Setting of level switch

##### Intermittent operation:

For pumps supplied with a level switch, the difference in level between start and stop can be set by adjusting the free cable between the level switch and the pump handle.

The longer the length of free cable, the larger the difference in level between start and stop.

The pump is allowed to run for maximum 5 minutes per 30 minutes without the motor being submerged in the liquid.

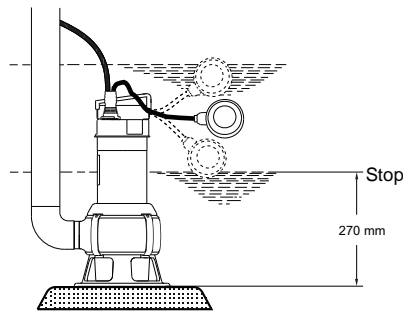


Fig. 5 Setting of level switch

##### Continuous operation:

During continuous operation, the pump must always be completely covered by the pumped liquid.

#### 5. Start-up

Before start-up, the pump inlet must be submerged in the pumped liquid.

Open the isolating valve, if fitted, and check the level switch setting.

**Note:** The pump may be run briefly to check the direction of rotation without being submerged in the pumped liquid.

#### 6. Maintenance and service



Before starting work on the pump, make sure that the electricity supply to the pump has been switched off and that it cannot be accidentally switched on.

Before carrying out maintenance and service, it must be ensured that the pump has been thoroughly flushed with clean water. Rinse the pump parts in water after dismantling.

Check the pump and replace the oil once a year. If the pump is used for pumping liquids containing abrasive particles or it is operating continuously, the pump must be checked at shorter intervals.

Out of consideration for the personal safety and health, this work must be carried out by specially trained persons.

Furthermore, all rules and regulations covering safety, health and environment must be observed.



During dismantling, caution should be exercised as there will be access to sharp edges, etc. which may cut.

A possible replacement of the cable or the level switch must be carried out by an authorised Grundfos service workshop.

##### 6.1 Oil

The pump contains approx. 60 ml non-poisonous oil. Used oil must be disposed of in accordance with local regulations.

If the drained oil contains water or other impurities, the shaft seal should be replaced.

## 6.2 Pump construction

The construction of the pump will appear from the table below and fig. D, page 185.

Pos.	Description
50	Pump housing
37a	O-ring
49	Impeller
150	Motor with flange
66	Washer
84	Base
67	Lock nut
6	Inlet part
105a	Shaft seal
182	Level switch

## 6.3 Service kits

Service kit	Part number
Shaft seal, standard	96429307
Shaft seal, FKM	96429308
Oil	96010646

## 6.4 Contaminated pumps

**Note:** If a pump has been used for a liquid which is injurious to health or toxic, the pump will be classified as contaminated.

If Grundfos is requested to service the pump, Grundfos must be contacted with details about the pumped liquid, etc. *before* the pump is returned for service. Otherwise Grundfos can refuse to accept the pump for service.

Possible costs of returning the pump are paid by the customer.

However, any application for service (no matter to whom it may be made) must include details about the pumped liquid if the pump has been used for liquids which are injurious to health or toxic.

## 7. Fault finding chart

Fault	Cause	Remedy
1. Motor does not start.	a) No electricity supply.	Connect the electricity supply.
	b) Motor switched off by level switch.	Adjust/replace the level switch.
	c) Fuses are blown.	Replace fuses.
	d) Motor protection/thermal relay has tripped out.	Wait until the motor protection trips in again/reset the relay.
	e) Impeller blocked by impurities.	Clean the impeller.
	f) Short-circuit in cable or motor.	Replace the defective part.
2. Motor protection/thermal relay trips out after short time of operation.	a) Temperature of pumped liquid too high.	Use another pump type.
	b) Impeller blocked or partly blocked by impurities.	Clean the pump.
	c) Phase failure.	Call an electrician.
	d) Voltage too low.	Call an electrician.
	e) Overload setting of the motor starter too low.	Adjust the setting.
	f) Incorrect direction of rotation. See section 3.1 <i>Checking of direction of rotation</i> .	Reverse the direction of rotation.
3. Pump runs constantly or gives insufficient water.	a) Pump partly blocked by impurities.	Clean the pump.
	b) Discharge pipe or valve partly blocked by impurities.	Clean the discharge pipe.
	c) Impeller not properly fixed to the shaft.	Tighten the impeller.
	d) Incorrect direction of rotation. See section 3.1 <i>Checking of direction of rotation</i> .	Reverse the direction of rotation.
	e) Incorrect setting of level switch.	Adjust the level switch.
	f) Pump too small for the application.	Replace the pump.
	g) Impeller worn.	Replace the impeller.
4. Pump runs but gives no water.	a) Pump blocked by impurities.	Clean the pump.
	b) Discharge pipe or non-return valve blocked by impurities.	Clean the discharge pipe.
	c) Impeller not properly fixed to the shaft.	Tighten the impeller.
	d) Air in pump.	Vent the pump and the discharge pipe.
	e) Liquid level too low. The pump inlet is not completely submerged in the pumped liquid.	Submerge the pump in the liquid or adjust the level switch.
	f) Level switch does not move freely.	Make the level switch move freely.

## 8. Disposal

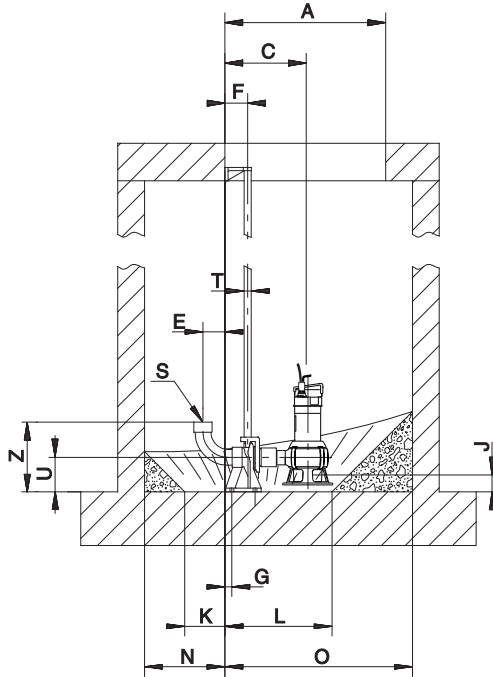
This product or parts of it must be disposed of in an environmentally sound way:

1. Use the public or private waste collection service.
2. If this is not possible, contact the nearest Grundfos company or service workshop.

Subject to alterations.

1-pump installation on auto-coupling

Fig. A



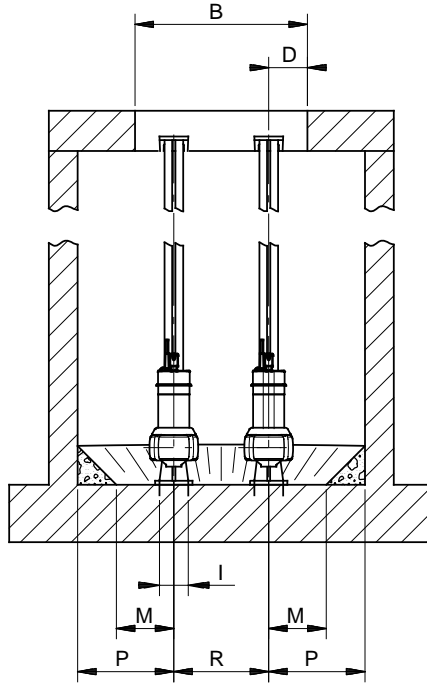
A	B	C	D	E	F	G	I	J	K
ø600	ø600	304	135	82	85	65	100	63	150

L	M	N	O	P	R	S	T	U	Z
400	200	300	700	500	-	R 2	¾"	130	261

TM03 4194 1806

2-pump installation on auto-coupling

Fig. B

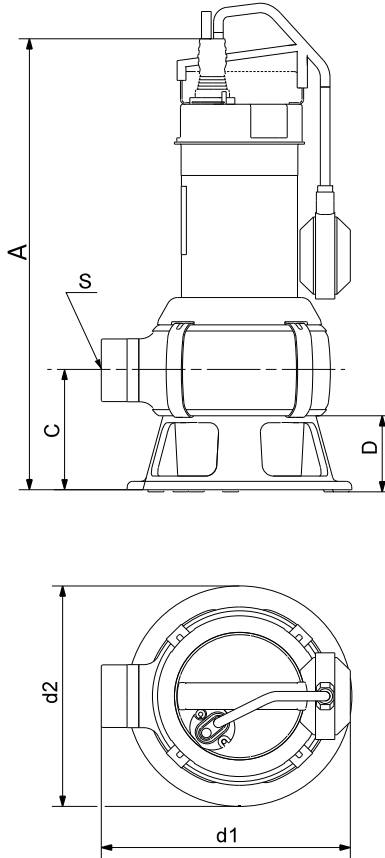


A	B	C	D	E	F	G	I	J	K
600	600	304	135	82	85	26	100	63	150

L	M	N	O	P	R	S	T	U	Z
400	200	300	700	335	330	R 2	3/4"	130	261

TM01 3592 0399

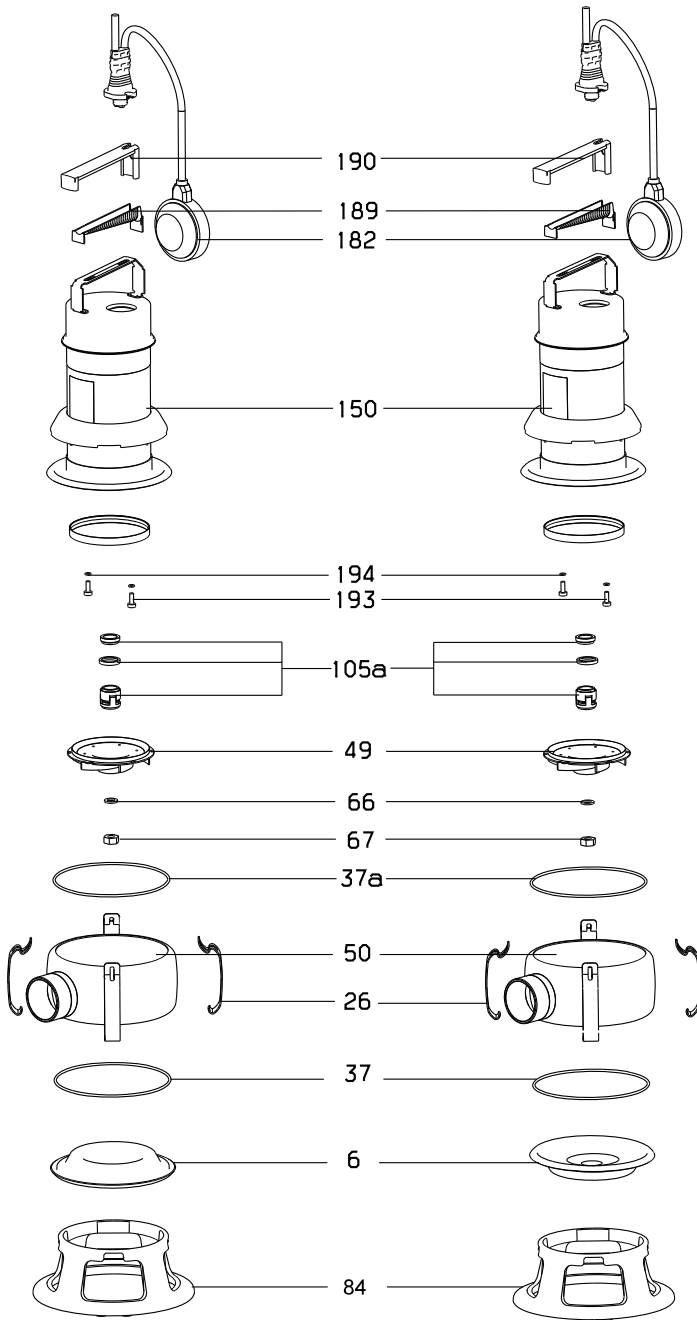
Free-standing Installation  
**Fig. C**



TM03 4196 1806

	<b>A</b>	<b>C</b>	<b>D</b>	<b>S</b>	<b>d1</b>	<b>d2</b>
<b>Unilift AP35B ≤ 600 W</b>	430	116	73	R 2	234	210
<b>Unilift AP35B &gt; 600 W Unilift AP50B</b>	455	116	73	R 2	234	210

**Fig. D**







**Argentina**

Bombas GRUNDFOS de Argentina S.A.  
Ruta Panamericana km. 37.500 Lote 34A  
1619 - Garin  
Pcia. de Buenos Aires  
Phone: +54-3327 414 444  
Telefax: +54-3327 411 111

**Australia**

GRUNDFOS Pumps Pty. Ltd.  
P.O. Box 2040  
Regency Park  
South Australia 5942  
Phone: +61-8-8461-4611  
Telefax: +61-8-8340 0155

**Austria**

GRUNDFOS Pumpen Vertrieb Ges.m.b.H.  
Grundfosstraße 2  
A-5002 Grödig/Salzburg  
Tel.: +43-6248-883-0  
Telefax: +43-6246-883-30

**Belgium**

N.V. GRUNDFOS Bellux S.A.  
Boomsstedenweg 81-83  
B-2630 Aartselaar  
Tel.: +32-3-870 7300  
Téléphone: +32-3-870 7301

**Belorussia**

Представительство ГРУНДФОС в  
Минске  
220123, Минск,  
ул. В. Хоружей, 22, оф. 1105  
Тел.: +(37517) 233 97 65,  
Факс: +(37517) 233 97 69  
E-mail: grundfos\_minsk@mail.ru

**Bosnia/Herzegovina**

GRUNDFOS Sarajevo  
Trg Heroja 16,  
BIH-71000 Sarajevo  
Phone: +387 33 713 290  
Telefax: +387 33 659 079  
e-mail: grundfos@bih.net.ba

**Brazil**

Mark GRUNDFOS Ltda.  
Av. Humberto de Alencar Castelo Branco,  
630  
CEP 09850 - 300  
São Bernardo do Campo - SP  
Phone: +55-11 4393 5533  
Telefax: +55-11 4343 5015

**Bulgaria**

GRUNDFOS Pumpen Vertrieb  
Representative Office - Bulgaria  
Bulgaria, 1421 Sofia  
Lozenetz District  
105-107 Arsenalski Blvd.  
Phone: +359 2963 3620, 2963 5653  
Telefax: +359 2963 1305

**Canada**

GRUNDFOS Canada Inc.  
2941 Brighton Road  
Oakville, Ontario  
L6H 6C9  
Phone: +1-905 829 9533  
Telefax: +1-905 829 9512

**China**

GRUNDFOS Pumps (Shanghai) Co. Ltd.  
51 Floor, Raffles City  
No. 268 Xi Zang Road. (M)  
Shanghai 200001  
PRC  
Phone: +86-021-612 252 22  
Telefax: +86-021-612 253 33

**Croatia**

GRUNDFOS CROATIA d.o.o.  
Cebini 37, Buzin  
HR-10010 Zagreb  
Phone: +385 1 6595 400  
Telefax: +385 1 6595 499  
www.grundfos.hr

**Czech Republic**

GRUNDFOS s.r.o.  
Čajkovského 21  
779 00 Olomouc  
Phone: +420-585-716 111  
Telefax: +420-585-716 299

**Denmark**

GRUNDFOS DK A/S  
Martin Bachs Vej 3  
DK-8850 Bjerringbro  
Tlf.: +45-87 50 50 50  
Telefax: +45-87 50 51 51  
E-mail: info\_GDK@grundfos.com  
www.grundfos.com/DK

**Estonia**

GRUNDFOS Pumps Eesti OÜ  
Peterburi tee 92G  
11415 Tallinn  
Tel.: + 372 606 1690  
Fax: + 372 606 1691

**Finland**

OY GRUNDFOS Pumput AB  
Mestariintie 11  
FIN-01730 Vantaa  
Phone: +358-3066 5650  
Telefax: +358-3066 5650

**France**

Pompes GRUNDFOS Distribution S.A.  
Parc d'Activités de Chesnes  
57, rue de Malacombe  
F-38290 St. Quentin Fallavier (Lyon)  
Tel.: +33-4 74 82 15 15  
Téléphone: +33-4 74 94 10 51

**Germany**

GRUNDFOS GMBH  
Schillerstr.: 33  
40699 Erkrath  
Tel.: +49-(0) 211 929 69-0  
Telefax: +49-(0) 211 929 69-3799  
e-mail: info@grundfos.de  
Service in Deutschland:  
e-mail: kundendienst@grundfos.de

**Greece**

GRUNDFOS Hellas A.E.B.E.  
20,th km. Athinon-Markopoulou Av.  
P.O. Box 71  
GR-19002 Peania  
Phone: +0030-210-66 83 400  
Telefax: +0030-210-66 46 273

**Hong Kong**

GRUNDFOS Pumps (Hong Kong) Ltd.  
Unit 1, Ground floor  
Siu Wai Industrial Centre  
29-33 Wing Hong Street &  
68 King Lam Street, Cheung Sha Wan  
Kowloon  
Phone: +852-27861706 / 27861741  
Telefax: +852-27858664

**Hungary**

GRUNDFOS Hungária Kft.  
Park u. 8  
H-2045 Törökbalánt,  
Phone: +36-23 511 110  
Telefax: +36-23 511 111

**India**

GRUNDFOS Pumps India Private Limited  
118 Old Mahabaliapuram Road  
Thoraipakkam  
Chennai 600 096  
Phone: +91-44 2496 6800

**Indonesia**

PT GRUNDFOS Pompa  
Jl. Rawa Sumur III, Blok III / CC-1  
Kawasan Industri, Pulogadung  
Jakarta 13930  
Phone: +62-21-460 6909  
Telefax: +62-21-460 6910 / 460 6901

**Ireland**

GRUNDFOS (Ireland) Ltd.  
Unit A, Merrywell Business Park  
Ballymunt Road Lower  
Dublin 12  
Phone: +353-1-4089 800  
Telefax: +353-1-4089 830

**Italy**

GRUNDFOS Pompe Italia S.r.l.  
Via Gran Sasso 4  
I-20060 Truccazzano (Milano)  
Tel.: +39-02-95838112  
Telefax: +39-02-95309290 / 95838461

**Japan**

GRUNDFOS Pumps K.K.  
Gotanda Metation Bldg., 5F,  
5-21-15, Higashi-gotanda  
Shiagawa-ku, Tokyo  
141-0022, Japan  
Phone: +81 35 448 1391  
Telefax: +81 35 448 9619

**Korea**

GRUNDFOS Pumps Korea Ltd.  
6th Floor, Aju Building 679-5  
Yeoksam-dong, Kangnam-ku, 135-916  
Seoul, Korea  
Phone: +82-2-5317 600  
Telefax: +82-2-5633 725

**Latvia**

SIA GRUNDFOS Pumps Latvia  
Deglava biznesa centrs  
Augusta Deglava iela 60, LV-1035, Rīga,  
Tālr.: + 371 714 9640, / 749 641  
Fakss: + 371 914 9646

**Lithuania**

GRUNDFOS Pumps UAB  
Smolensko g. 6  
LT-03201 Vilnius  
Tel.: + 370 52 395 430  
Fax: + 370 52 395 431

**Malaysia**

GRUNDFOS Pumps Sdn. Bhd.  
7 Jalan Peguam UI/25  
Glenmarie Industrial Park  
40150 Shah Alam  
Selangor  
Phone: +60-3-5569 2922  
Telefax: +60-3-5569 2866

**México**

Bombas GRUNDFOS de México S.A. de  
C.V.  
Boulevard Tlaco No. 15  
Parque Industrial Stiva Aeropuerto  
Apodaca, N.L. 66600  
Phone: +52-81-8144 4000  
Telefax: +52-81-8144 4010

**Netherlands**

GRUNDFOS Netherlands  
Veluwezoom 35  
1326 AE Almere  
Postbus 22015  
1302 CA ALMERE  
Tel.: +31-86-478 6336  
Telefax: +31-86-478 6332  
e-mail: info\_gnl@grundfos.com

**New Zealand**

GRUNDFOS Pumps NZ Ltd.  
17 Beatrice Timsey Crescent  
North Harbour Industrial Estate  
Albany, Auckland  
Phone: +64-9-415 3240  
Telefax: +64-9-415 3250

**Norway**

GRUNDFOS Pumper A/S  
Strømsveien 344  
Postboks 235, Leirdal  
N-1011 Oslo  
Tlf.: +47-22-92 40 70  
Telefax: +47-22-92 31 50

**Poland**

GRUNDFOS Pompy Sp. z o.o.  
ul. Klonowa 23  
Baranowo k. Poznania  
Pl.-62-081 Przewmierowo  
Tel: +(48-61) 650 13 00  
Fax: +(48-61) 650 13 50

**Portugal**

Bombas GRUNDFOS Portugal, S.A.  
Rua Calvet de Magalhães, 241  
Apartado 1079  
P-2770-155 Paço de Arcos  
Tel.: +351-21-440 76 00  
Telefax: +351-21-440 76 90

**România**

GRUNDFOS Pompe România SRL  
Bd. Biruintei, nr 103  
Pantelimon county Ilofov  
Phone: +40 21 200 4100  
Telefax: +40 21 200 4101  
E-mail: romania@grundfos.ro

**Russia**

ООО Грундфос  
Прессия, 109544 Москва, ул. Школьная 39  
Тел. +7(495) 737 30 00, 564 88 00  
Факс +7(495) 737 75 36, 564 88 11  
E-mail grundfos.moscow@grundfos.com

**Serbia**

GRUNDFOS Predstavništvo Beograd  
Dr. Milutina Ivkovića 2a/29  
YU-11000 Beograd  
Phone: +381 11 26 47 877 / 11 26 47 496  
Telefax: +381 11 26 48 340

**Singapore**

GRUNDFOS (Singapore) Pte. Ltd.  
24 Tuas West Road  
Jurong Town  
Singapore 638381  
Phone: +65-6865 1222  
Telefax: +65-6861 8402

**Slovenia**

GRUNDFOS PUMPEN VERTRIEB  
Ges.m.b.H.,  
Porduznica Ljubljana  
Štandrova 8b, SI-1231 Ljubljana-Črnuče  
Phone: +386 1 568 0610  
Telefax: +386 1 568 0619  
E-mail: slovenia@grundfos.si

**Spain**

Bombas GRUNDFOS España S.A.  
Camino de la Fuenteilla, s/n  
E-28110 Algete (Madrid)  
Tel.: +34-91-848 8800  
Telefax: +34-91-828 0465

**Sweden**

GRUNDFOS AB  
Box 533 (Lunnagårdsgatan 6)  
431 24 Molndal  
Tel.: +46(0)771-32 23 00  
Telefax: +46(0)31-331 94 60

**Switzerland**

GRUNDFOS Pumpen AG  
Bruggacherstrasse 10  
CH-8117 Fällanden/ZH  
Tel.: +41-1-806 8111  
Telefax: +41-1-806 8115

**Taiwan**

GRUNDFOS Pumps (Taiwan) Ltd.  
7 Floor, 219 Min-Chuan Road  
Taichung, Taiwan, R.O.C.  
Phone: +886-4-2305 0868  
Telefax: +886-4-2305 0878

**Thailand**

GRUNDFOS (Thailand) Ltd.  
92 Chaloom Phrakiat Rama 9 Road,  
Dokmai, Pravej, Bangkok 10250  
Phone: +66-2-725 8999  
Telefax: +66-2-725 8998

**Turkey**

GRUNDFOS POMPA San. ve Tic. Ltd. Sti.  
Gebze Organize Sanayi Bölgesi  
İhsan dede Caddesi,  
2. yol 200. Sokak No. 204  
41490 Gebze/Kocaeli  
Phone: +90 - 262-679 7979  
Telefax: +90 - 262-679 7905  
E-mail: satis@grundfos.com

**Ukraine**

ТОВ ГРУНДФОС УКРАЇНА  
01010 Київ, вул. Московська 85,  
Тел.: (+38 044) 390 40 50  
Факс: (+38 044) 390 40 59  
E-mail: ukraine@grundfos.com

**United Arab Emirates**

GRUNDFOS Gulf Distribution  
P.O. Box 16768  
Jebel Ali Free Zone  
Dubai  
Phone: +971-4- 8815 166  
Telefax: +971-4-8815 136

**United Kingdom**

GRUNDFOS Pumps Ltd.  
Grovebury Road  
Leighton Buzzard/Beds. LU7 8TL  
Phone: +44-1525-850000  
Telefax: +44-1525-850011

**U.S.A.**

GRUNDFOS Pumps Corporation  
17100 West 118th Terrace  
Olathe, Kansas 66061  
Phone: +1-913-227-3400  
Telefax: +1-913-227-3500

**Uzbekistan**

Представительство ГРУНДФОС в  
Ташкенте  
700000 Ташкент ул.Усмана Носира 1-й  
тулик 5  
Телефон: (3712) 55-68-15  
Факс: (3712) 53-36-35

<b>96004693</b> 0310	<b>226</b>
Repl. 96004693 0909	

The name Grundfos, the Grundfos logo, and the payoff Be–Think–Innovate are registered trademarks owned by Grundfos Management A/S or Grundfos A/S, Denmark. All rights reserved worldwide.

---