


| Count | Description |
|-------|---|
| 1 | <p data-bbox="225 338 427 367">MAGNA1 32-60 F</p> <div data-bbox="225 376 558 622">  </div> <p data-bbox="619 636 1070 665" style="text-align: center;">Product photo could vary from the actual product</p> <p data-bbox="225 667 491 696">Product No.: 99221269</p> <p data-bbox="225 698 1458 797">The new MAGNA1 is the simple option for a job well done. It is the perfect choice when replacing older circulators and due to its compliance with the EuP 2015 regulations, substantial savings on electricity is a reality. The ideal choice for basic performance needs in applications where basic system control and monitoring is desired.</p> <ul data-bbox="264 810 1347 1014" style="list-style-type: none"> • Monitoring via the fault relay, ensuring peace of mind • Digital start/stop input available for remote pump control • Continuous operation and reduced downtime with the wireless twin pump function (available on twin-head pumps) • High energy efficiency resulting in substantial savings on electricity • Easy setup and operation via the simple user interface • No maintenance due to the canned-rotor type design. <p data-bbox="225 1046 1034 1075">MAGNA1 is the simple and efficient choice for most applications including</p> <ul data-bbox="264 1077 727 1312" style="list-style-type: none"> • Heating <ul data-bbox="300 1106 528 1193" style="list-style-type: none"> - Main pump - Mixing loops - Heating surfaces • Cooling <ul data-bbox="300 1225 727 1312" style="list-style-type: none"> - Air conditioning surfaces - Ground source heat pump systems - Smaller chiller applications <p data-bbox="225 1373 300 1402">Liquid:</p> <p data-bbox="225 1404 719 1520">Pumped liquid: Water Liquid temperature range: 14 .. 230 °F Selected liquid temperature: 140 °F Density: 61.35 lb/ft³</p> <p data-bbox="225 1552 341 1581">Technical:</p> <p data-bbox="225 1583 941 1641">TF class: 110 Approvals on nameplate: CE, VDE, EAC, CN ROHS, WEEE</p> <p data-bbox="225 1673 336 1702">Materials:</p> <p data-bbox="225 1704 777 1785">Pump housing: Cast iron EN-GJL-200 ASTM A48-200B</p> <p data-bbox="225 1794 732 1823">Impeller: PES 30%GF</p> <p data-bbox="225 1854 352 1883">Installation:</p> <p data-bbox="225 1886 719 2056">Range of ambient temperature: 32 .. 104 °F Maximum operating pressure: 145.04 psi Flange standard: DIN Pipe connection: DN 32 Pressure stage: PN 6/10 Port-to-port length: 8 11/16 in</p> |



Company name:

Created by:

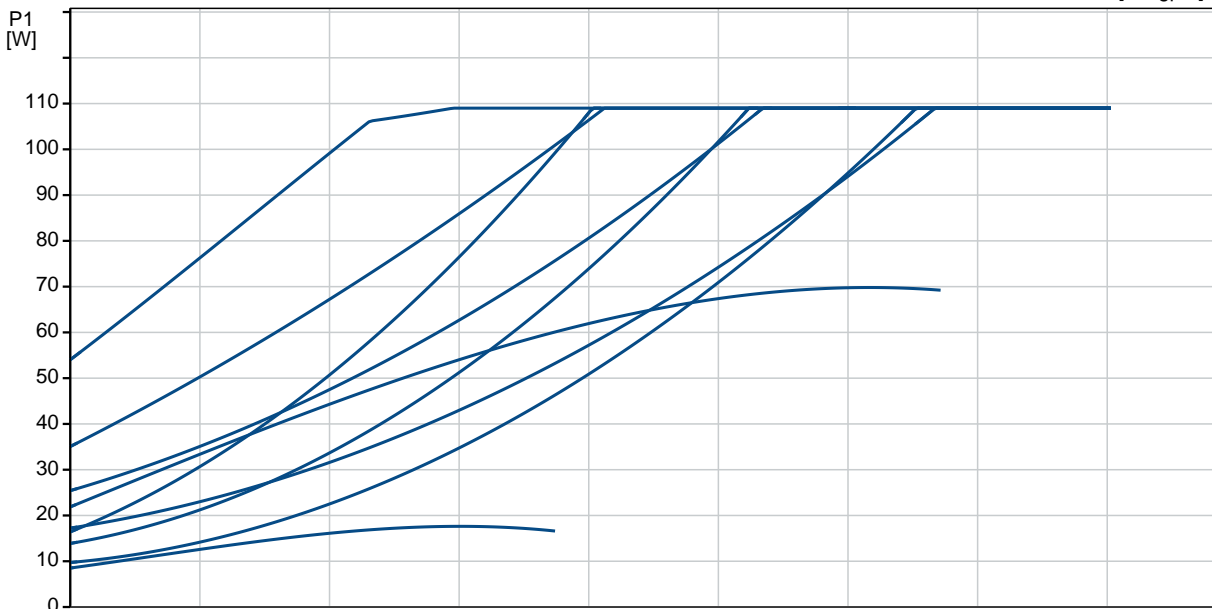
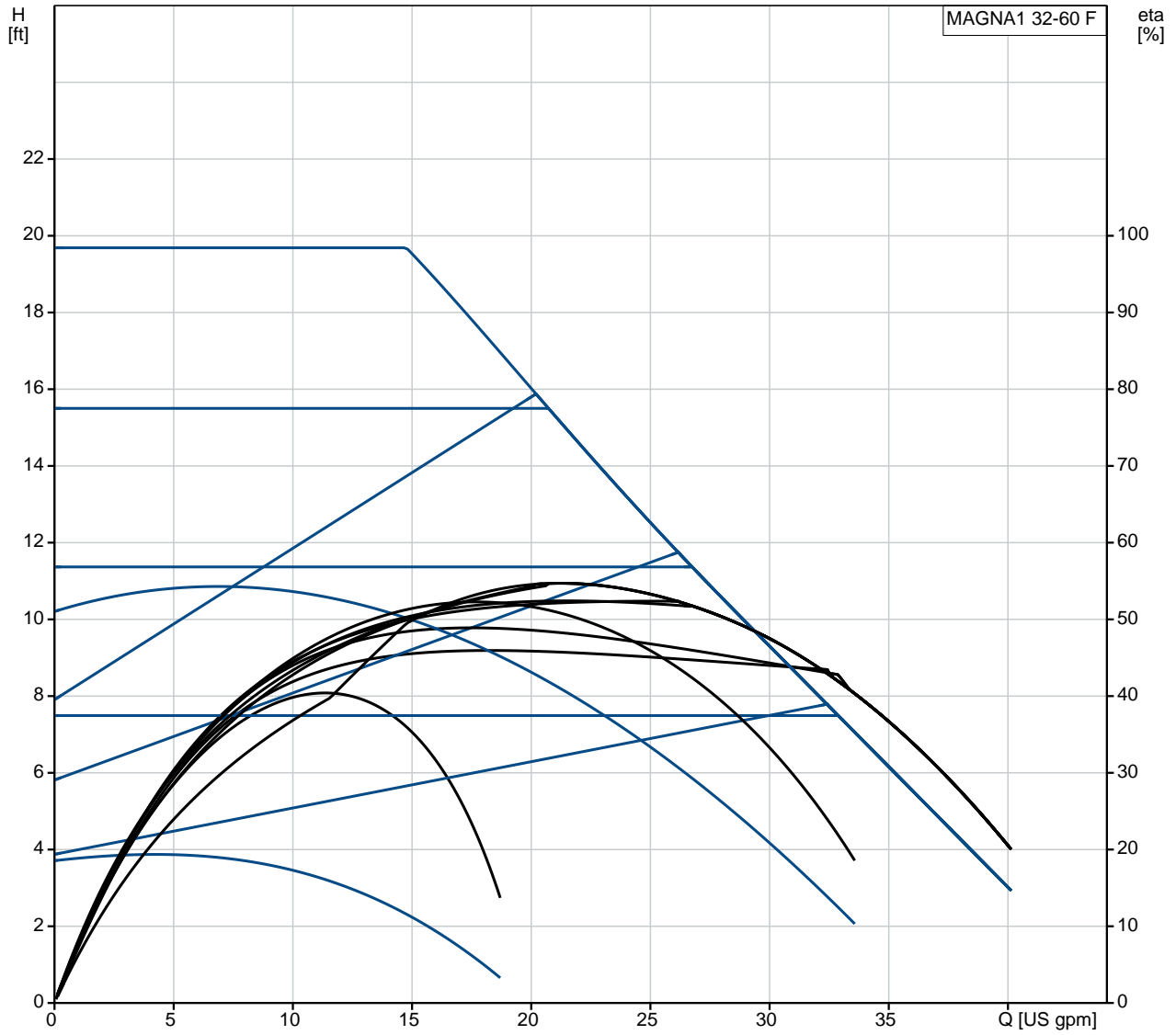
Phone:

Date:

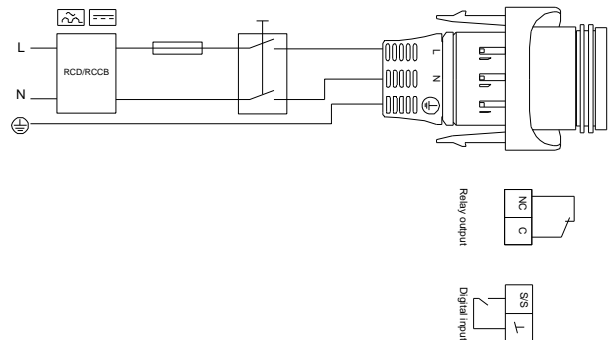
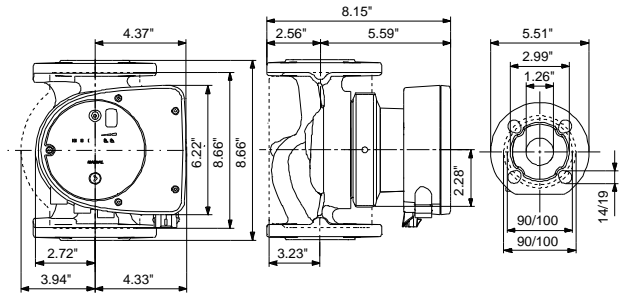
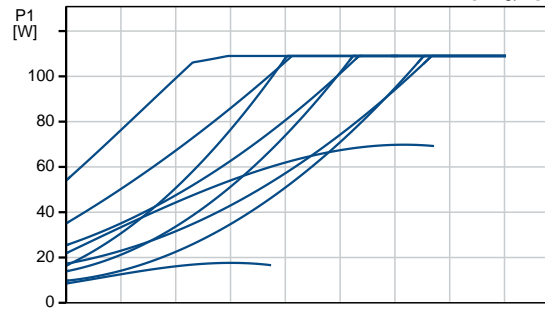
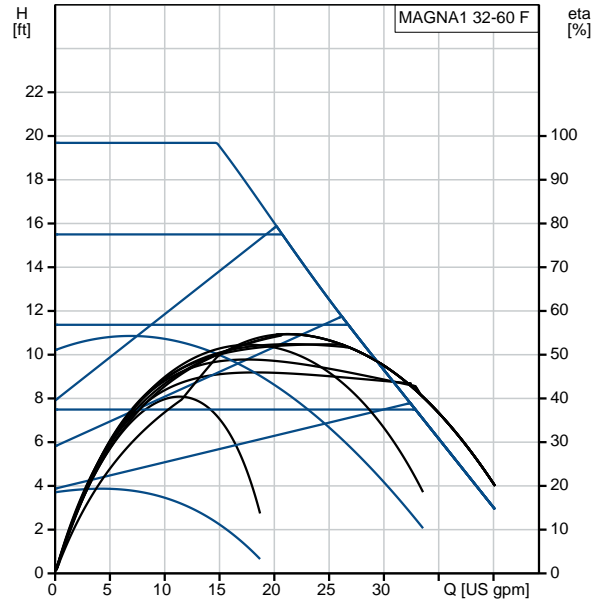
11/11/2020

| Count | Description |
|-------|---|
| | <p>Electrical data:</p> <p>Power input - P1: 9 .. 111 W</p> <p>Main frequency: 50 / 60 Hz</p> <p>Rated voltage: 1 x 230 V</p> <p>Maximum current consumption: 0.09 .. 0.9 A</p> <p>Enclosure class (IEC 34-5): X4D</p> <p>Insulation class (IEC 85): F</p> <p>Others:</p> <p>Energy (EEI): 0.20</p> <p>Net weight: 16.5 lb</p> <p>Gross weight: 18.7 lb</p> <p>Shipping volume: 0.57 ft³</p> <p>Finnish LVI No.: 4615314</p> |

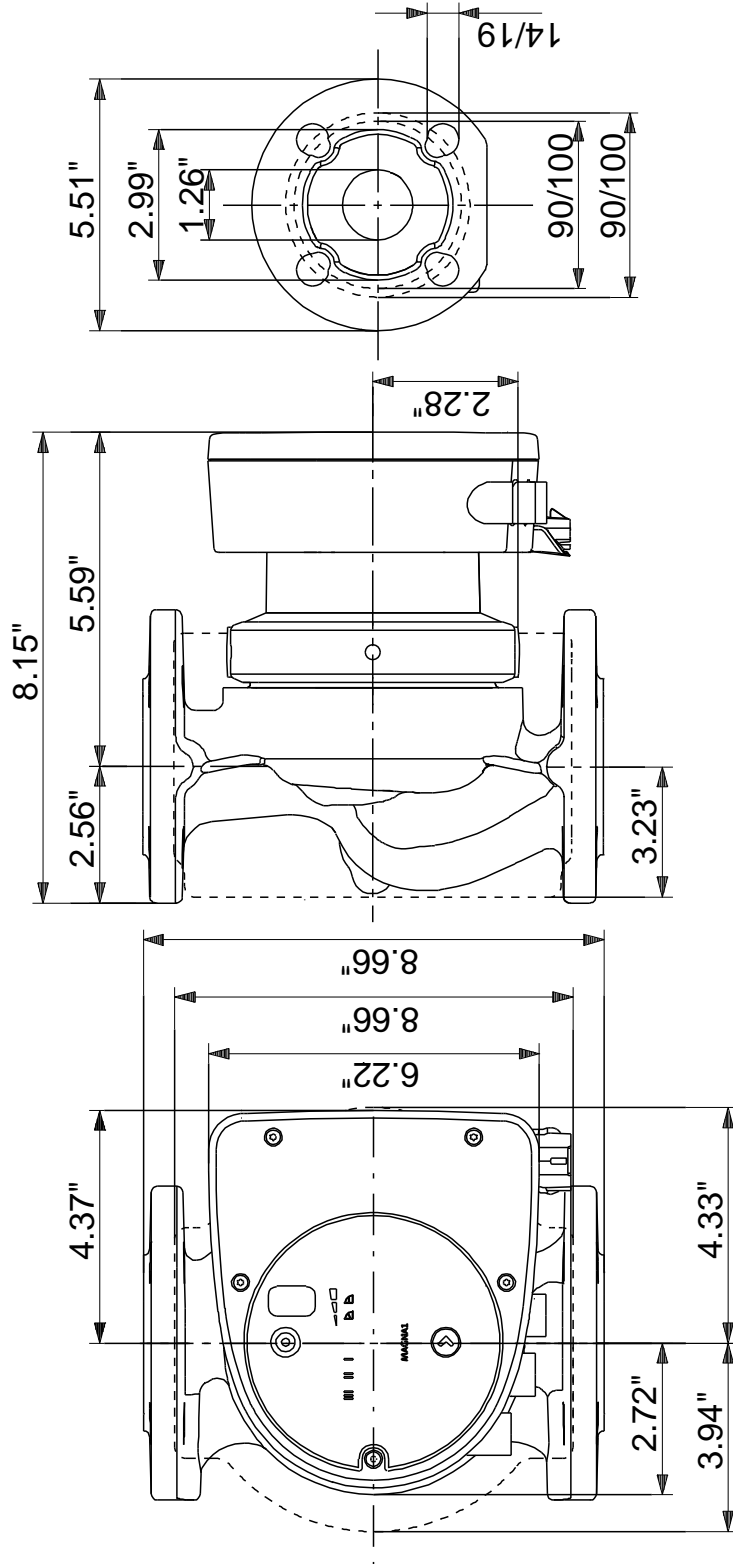
99221269 MAGNA1 32-60 F



| Description | Value |
|-------------------------------|--------------------------|
| General information: | |
| Product name: | MAGNA1 32-60 F |
| Product No.: | 99221269 |
| EAN: | 5712608942426 |
| Technical: | |
| Head max: | 19.69 ft |
| TF class: | 110 |
| Approvals on nameplate: | CE,VDE,EAC,CN ROHS,WEEE |
| Model: | C |
| Materials: | |
| Pump housing: | Cast iron |
| Pump housing: | EN-GJL-200 |
| Pump housing: | ASTM A48-200B |
| Impeller: | PES 30%GF |
| Installation: | |
| Range of ambient temperature: | 32 .. 104 °F |
| Maximum operating pressure: | 145.04 psi |
| Flange standard: | DIN |
| Pipe connection: | DN 32 |
| Pressure stage: | PN 6/10 |
| Port-to-port length: | 8 11/16 in |
| Liquid: | |
| Pumped liquid: | Water |
| Liquid temperature range: | 14 .. 230 °F |
| Selected liquid temperature: | 140 °F |
| Density: | 61.35 lb/ft ³ |
| Electrical data: | |
| Power input - P1: | 9 .. 111 W |
| Main frequency: | 50 / 60 Hz |
| Rated voltage: | 1 x 230 V |
| Maximum current consumption: | 0.09 .. 0.9 A |
| Enclosure class (IEC 34-5): | X4D |
| Insulation class (IEC 85): | F |
| Others: | |
| Energy (EEI): | 0.20 |
| Net weight: | 16.5 lb |
| Gross weight: | 18.7 lb |
| Shipping volume: | 0.57 ft ³ |
| Finnish LVI No.: | 4615314 |

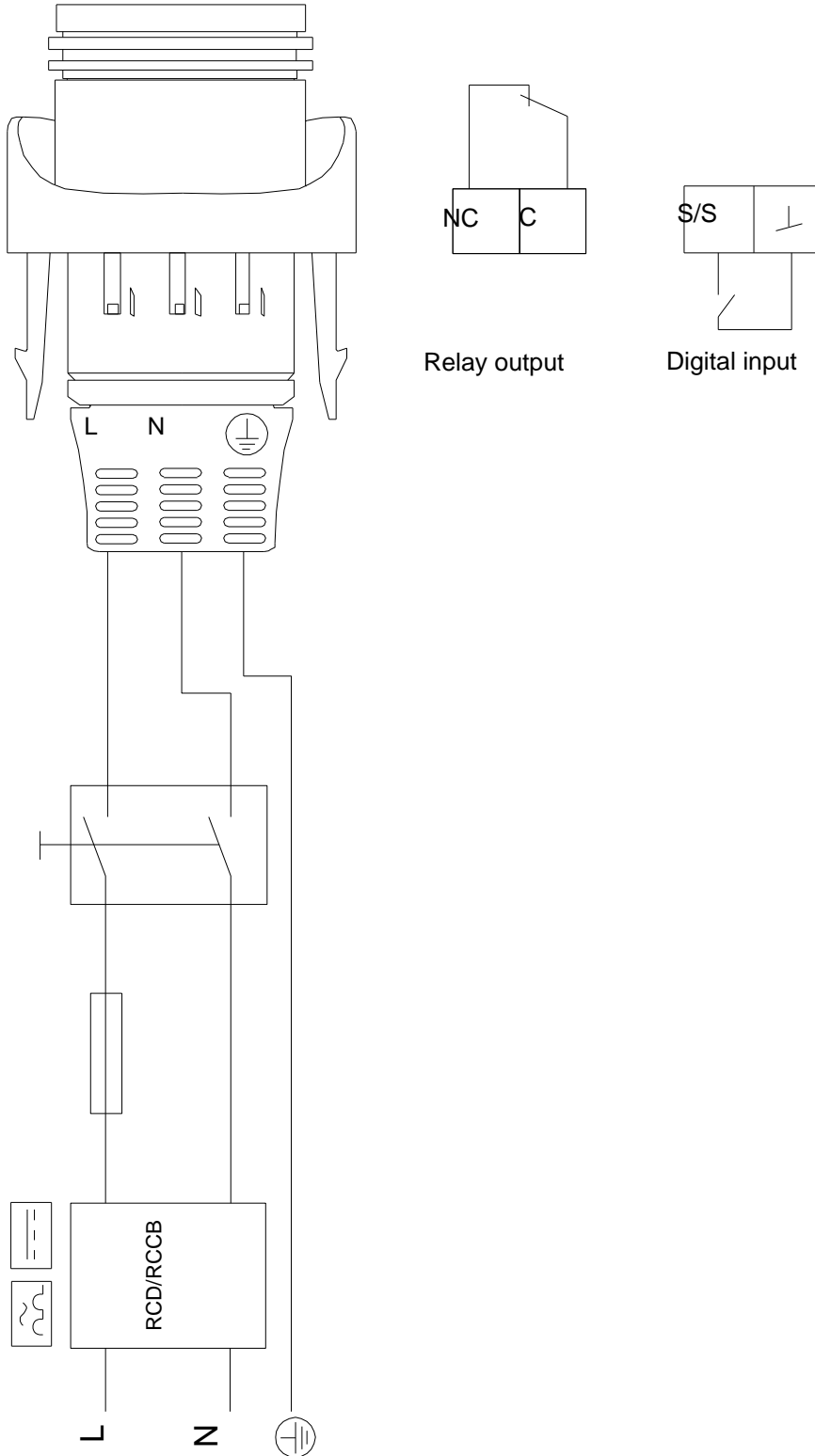


99221269 MAGNA1 32-60 F



Note! All units are in [in] unless otherwise stated.
 Disclaimer: This simplified dimensional drawing does not show all details.

99221269 MAGNA1 32-60 F



All units are [in] unless otherwise presented.